

# MiniMed™ 780G System Using the one-pressserter with Guardian™ 4 Sensor quick reference guide

## Inserting a new sensor

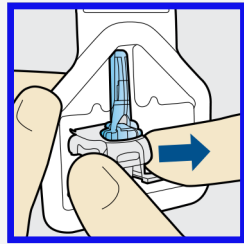
Start by washing your hands and clean the insertion site with alcohol.

1

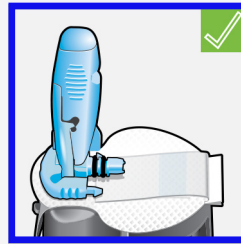


Open the sensor package. Pull the corner of the paper covering to open the sensor package.

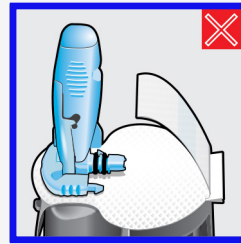
2



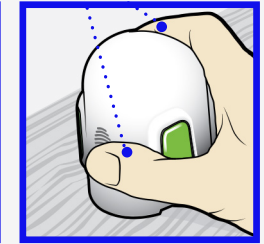
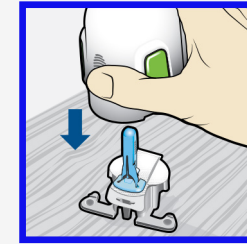
Hold the sensor by the plastic pedestal. Remove the sensor with the attached plastic pedestal from the packaging by holding the pedestal only. Place the sensor and the pedestal on a clean, flat surface (such as a table).



Tuck the adhesive tab. Make sure that the sensor's adhesive tab is tucked under the sensor connector and snaps.



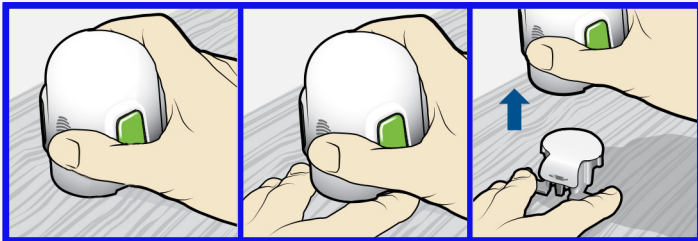
3



Fingers are NOT holding the side buttons.

Load sensor into serter. Grip serter exactly as shown - with thumb on thumb print on serter. Do not hold the green side buttons. Push serter down onto pedestal until base of serter sits flat on table.

4

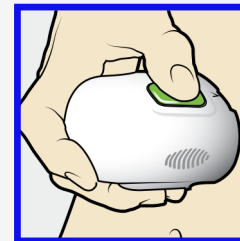


Detach serter from pedestal. To detach serter from the pedestal, grip serter as shown with thumb on thumb print on serter. **Make sure that the pedestal is firmly on the table before pulling the serter away.** With other hand, place two fingers on pedestal arms, and slowly pull serter straight up. If preferred, you may like to remove the backing paper prior to insertion, especially if inserting in the arm.



**CAUTION:**  
Do not detach pedestal from serter in mid-air as this may damage the sensor.

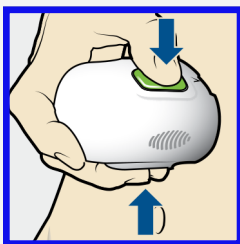
5



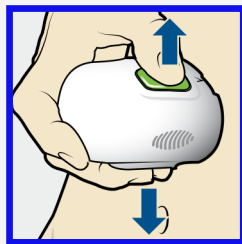
Place the serter on the body. Hold the serter steadily against the cleaned insertion site, without pushing the serter too deeply into the skin.



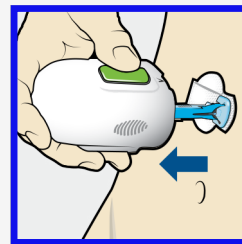
**NOTE:**  
Failing to hold the serter securely flat against the body may allow the serter to spring back after pressing the buttons and result in an improper insertion of the sensor.



Insert sensor. Press and release **bump** on both buttons at same time.

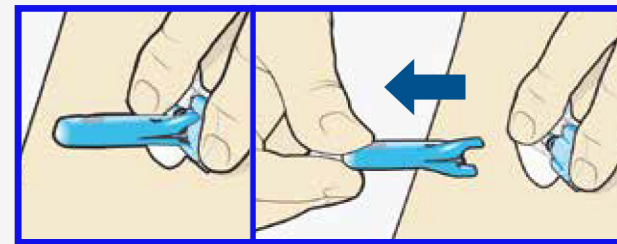


Hold serter against body. Continue holding serter against body for at least five seconds to allow adhesive to stick to skin.



Remove serter from body. Slowly pull serter away from skin, making sure buttons are not pressed.

6



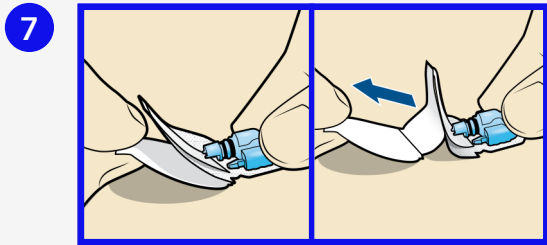
Remove needle housing. Gently hold base of sensor against skin with one hand. With other hand, hold needle housing **at top** and slowly pull it straight away from sensor. Dispose of needle housing in sharps container.



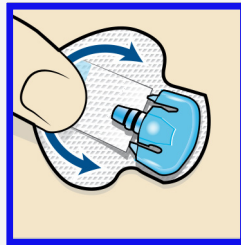
**NOTE:**  
Apply additional liquid adhesive such as Skin Prep™. Allow it to dry.

# MiniMed™ 780G System Using the one-press senter with Guardian™ 4 Sensor quick reference guide

## Inserting a new sensor (cont)



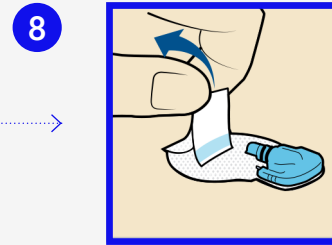
Remove adhesive pad liner. Hold sensor in place and gently remove adhesive liner from under adhesive pad.



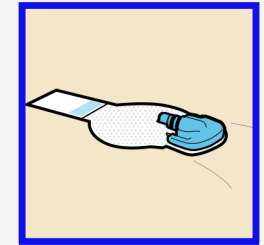
Press entire adhesive pad against skin. Firmly press adhesive against skin and smooth entire adhesive pad so it sticks to skin.



**NOTE:**  
The Guardian™ 4 Sensor adhesive is sensitive to pressure. Continue applying pressure on the adhesive to ensure that the sensor remains inserted in the skin for 7 days of wear.

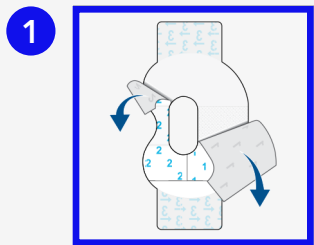


Untuck adhesive tab from under sensor connector.

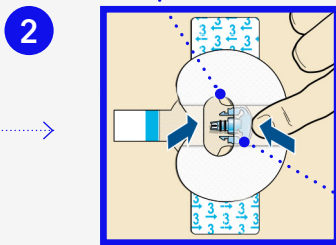


Straighten adhesive tab so it lies flat against your skin, but do not remove the adhesive liner yet.

## Taping the sensor



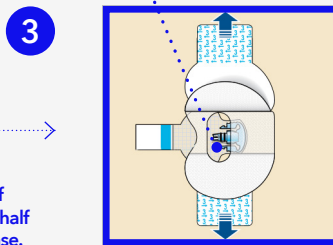
Remove liner 1.



Both the sensor and the skin are taped.

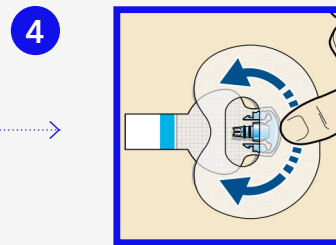
Apply the tape as shown and press it down firmly.

The wide part of the tape covers half of the sensor base.



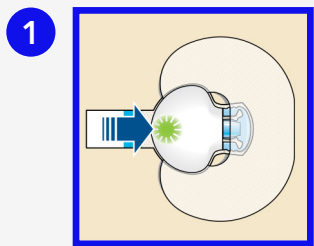
Connector and snaps in hole of tape.

Remove liner 2 from each side.



Smooth the tape.

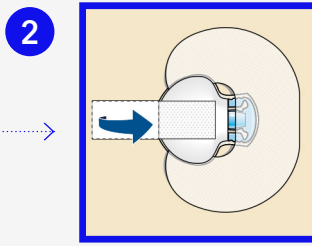
## Connecting your transmitter



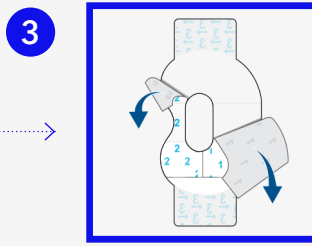
Connect the transmitter to the sensor.



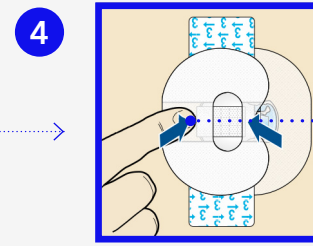
**NOTE:**  
Wait for the green light on the transmitter to flash. If the green light does not flash, refer to the Troubleshooting section of the transmitter user guide.



Remove liner from adhesive tab. Cover transmitter with adhesive tab. **Do not pull tab too tightly.**



To apply 2nd tape, remove liner 1 & liner 2.

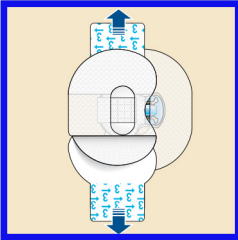


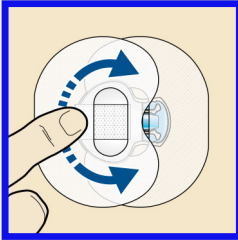
Rotate 2nd tape & place tape over transmitter. Press down firmly.

The wide part of the tape covers the end of the transmitter and the skin.

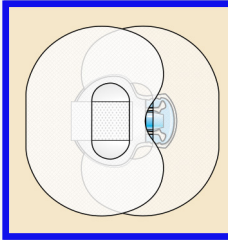
# MiniMed™ 780G System Using the one-press senter with Guardian™ 4 Sensor quick reference guide

## Connecting your transmitter (cont)

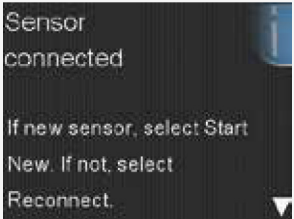
**5**  Remove liner 2 from each side.

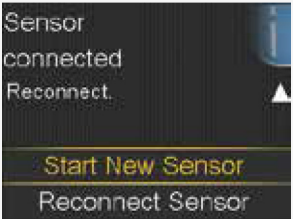
**6**  Smooth the tape.

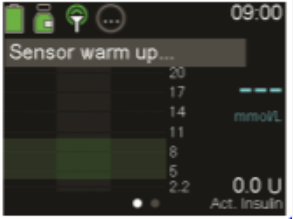
**NOTE:**  
Check the site regularly.  
Apply additional tape if the sensor and the transmitter are not secure.

**7**  This image is an example of oval tape applied correctly.

## Starting the sensor

**1**  Once Sensor connected message appears, press **▼**. This typically takes less than a minute, but may take up to 10 minutes.

**2**  Select **Start New Sensor**.

**3**  The **Sensor warm-up started** message will appear. Press **▼** and then **○** to clear.

**At the end of the 2 hour warm-up period, sensor glucose will start to be shown on the pump screen.**

# Medtronic

12455-042023

Medtronic Australasia Pty Ltd  
2 Alma Road  
Macquarie Park, NSW 2113, Australia

Tel: +61 2 9857 9000  
Fax: +61 2 9889 5167  
Toll Free: 1800 777 808

E-Mail: [australia.diabetes@medtronic.com](mailto:australia.diabetes@medtronic.com)  
Facebook: [www.facebook.com/MedtronicDiabetesAUS](https://www.facebook.com/MedtronicDiabetesAUS)  
YouTube: [MedtronicDiabetesANZ](https://www.youtube.com/MedtronicDiabetesANZ)

<https://www.medtronic-diabetes.com.au/>

**Always follow the instructions for use.**

For detailed information regarding the instructions for use, indications, contraindications, warnings, precautions, and potential adverse events, please consult the device manual. For further information, contact your local Medtronic representative.

© 2023 Medtronic Australasia Pty Ltd. All Rights Reserved. Please note: In contacting the Diabetes Toll Free, your personal and health information may be disclosed to an operator located outside Australia. 10411-112021