

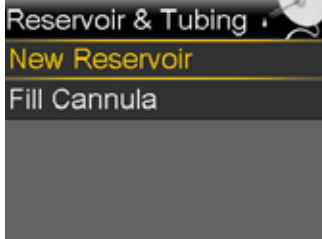
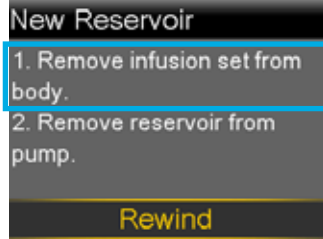


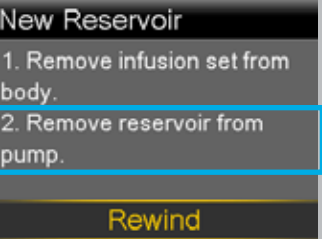
START HERE

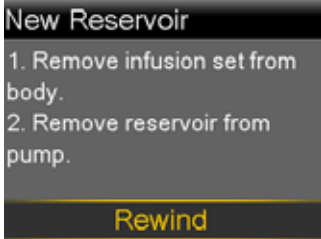
1  Wash your hands. Press **O**. Select **Options**.


2  Select **Reservoir & Tubing**.

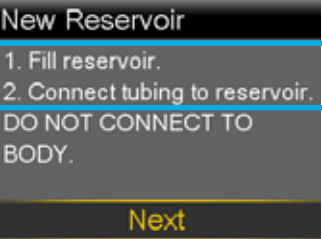
3  Select **New Reservoir**.

4  Remove the infusion set you have been using by loosening the adhesive and pulling away from body.

5  Remove the used reservoir from the pump.

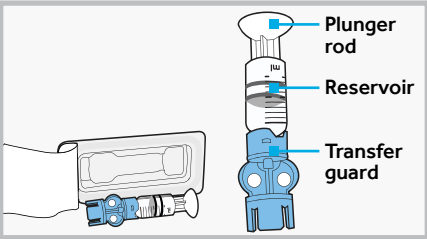
6  Select **Rewind**.

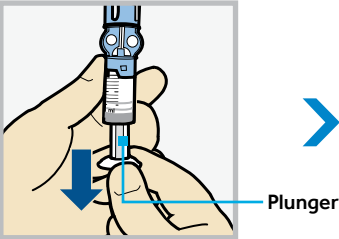
 Please wait...

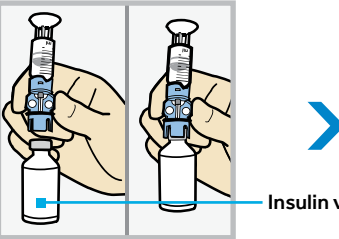
 **Next**

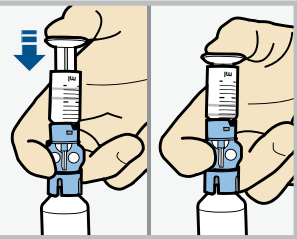
FILL RESERVOIR & CONNECT TO THE INFUSION SET TUBING

Follow the next steps to fill reservoir with insulin and connect to the infusion set tubing.

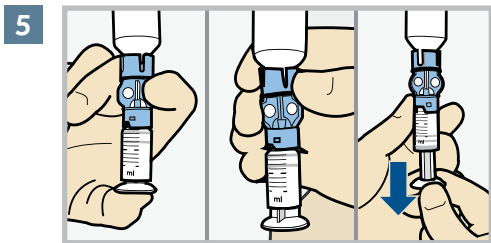
1  Remove from package. Make sure insulin vial is at room temperature to reduce the risk of air bubbles.

2  Pull plunger down to the amount that you plan to fill with insulin.

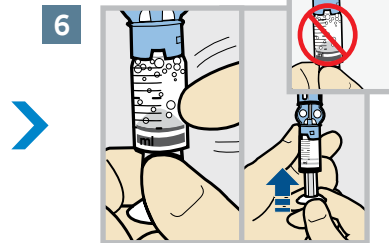
3  Wipe vial with alcohol. Place vial on table. Firmly press the blue transfer guard onto vial.

4  Push and hold plunger down.

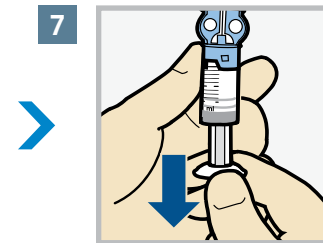
WARNING: If insulin or any liquid gets inside the tubing connector, it can temporarily block the vents that allow the pump to properly fill the infusion set. This may result in the delivery of too little or too much insulin, which could cause hyperglycaemia or hypoglycaemia.



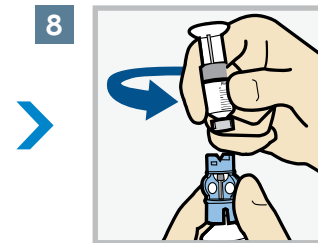
5 With your thumb still on the plunger, flip over so vial is on top. Release thumb and pull plunger down to fill with insulin.



6 Tap the reservoir to move air bubbles to top of reservoir. Push plunger up to move air into vial.



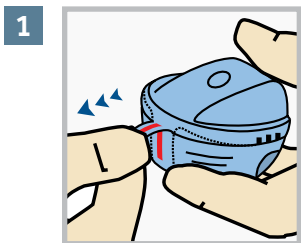
7 If needed, pull plunger back down to amount of insulin needed for 2-3 days.



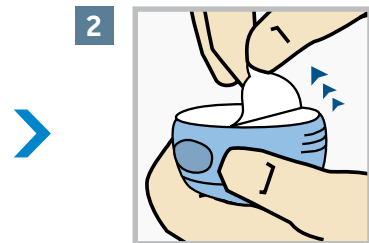
8 To avoid getting insulin on the top of the reservoir, turn vial over so it is upright. Hold transfer guard and turn reservoir counter-clockwise and remove from transfer guard.

CONNECT RESERVOIR TO INFUSION SET

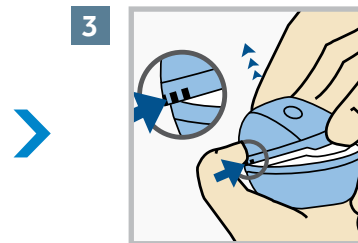
You will place the tubing connector onto the end of the infusion set to the filled reservoir.



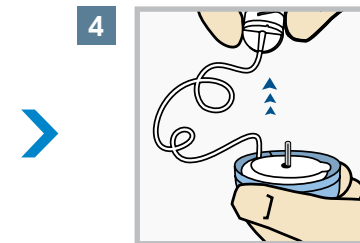
1 Remove the infusion set from packaging by pulling down the red plastic tab.



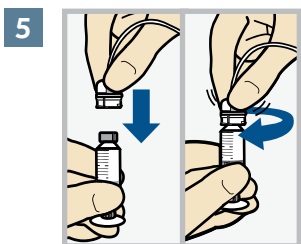
2 Pull the paper tab to remove the sterile paper backing from the bottom.



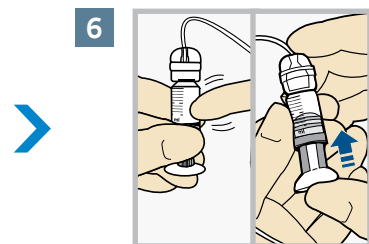
3 Squeeze the three raised markings on both sides of the lid. Lift and remove.



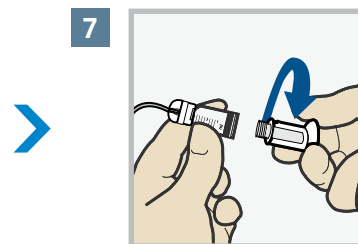
4 Free tubing from slot. Gently unwind tubing in a counter clockwise direction.



5 Gently push the tubing connector onto reservoir. Turn clockwise until locked. You will hear a click.



6 If you see air bubbles, tap reservoir to move them to top. Push plunger just a bit to move them into tubing.

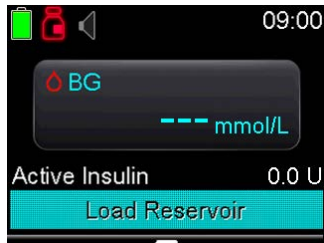


7 Twist the plunger counter-clockwise to loosen and remove.



THE BACKLIGHT MAY HAVE TURNED OFF

Press any button to turn the screen back on.



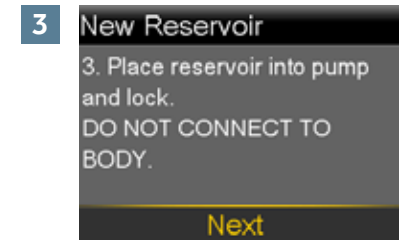
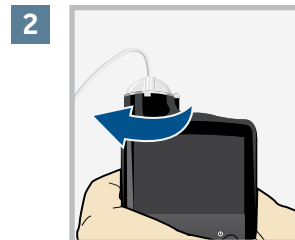
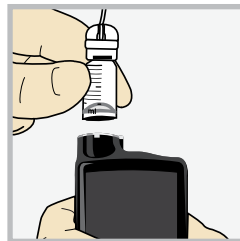
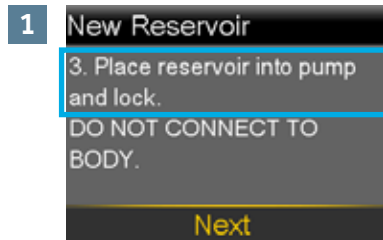
Press **O** to open the menu. If the pump is locked, you will need to unlock the pump after pressing **O**.

Select **Load Reservoir** from the menu.

Select **Next**.

PLACE RESERVOIR INTO PUMP

Now place the filled reservoir into the reservoir compartment of the pump.



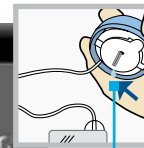
Place reservoir into pump.

Turn clockwise until you feel reservoir lock into place.

Select **Next**.

LOAD RESERVOIR AND FILL TUBING

Follow these steps to load the reservoir and fill the tubing.



Drops at end of tubing



Select **Load** and keep holding **O**.

When you see this screen, select **Next**.

Select **Fill** and keep holding **O** until you see drops at the end of tubing, then let go.

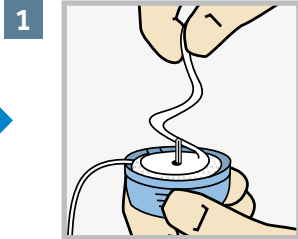
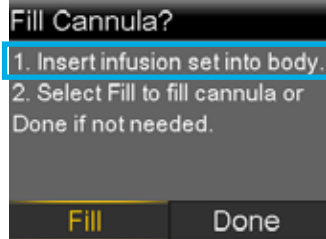
After you see drops, press **>** and select **Next**.

Continued on next page

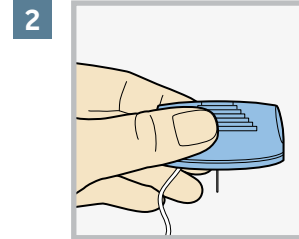


INSERT INFUSION SET

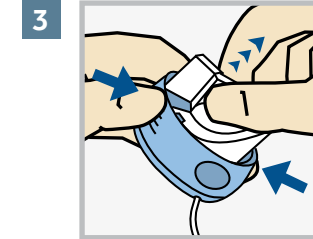
Next, follow the steps to insert the infusion set into your body.



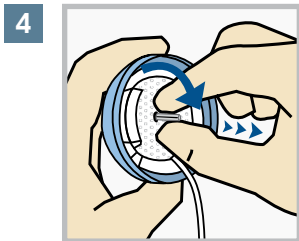
1 Gently peel paper to expose the adhesive.



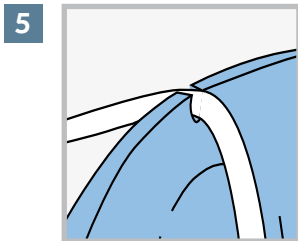
2 Turn over and hold by the lined ridges on the sides.



3 With other hand pull up on the center handle until it clicks and locks into place.



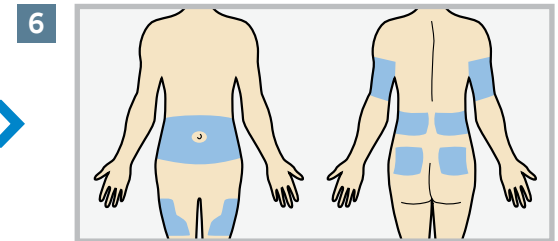
4 Carefully hold the needle guard by tip. Gently turn the needle guard and pull to remove it.



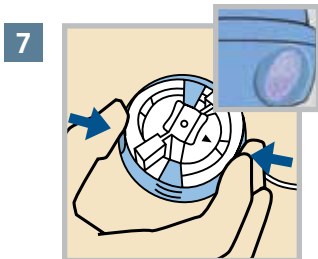
5 Place the tubing in slot on side ofserter.



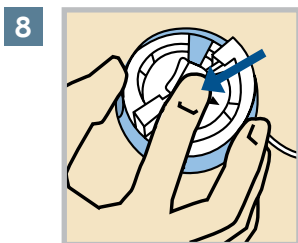
CAUTION:
Be careful not to pull the tubing tightly when placing it in the slot.



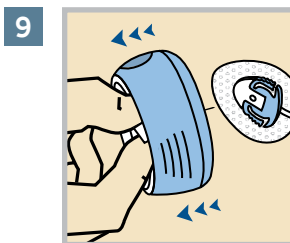
6 Choose an insertion site from the shaded areas shown here. Wipe with alcohol or other antiseptic.



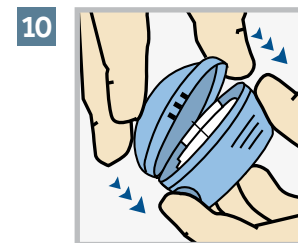
7 Place against prepared site on body. To insert, press the round indentations on each side ofserter to insert needle.



8 Push down on center ofserter to press adhesive against skin.



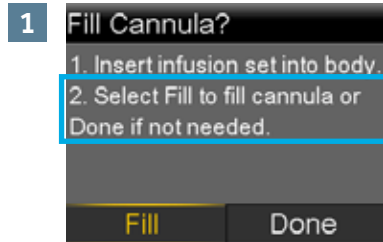
9 To removeserter, hold the center handle and gently pull it straight out away from body. Press the adhesive securely against skin.



10 Place the lid back ontoserter to safely discard needle.

FILL CANNULA

You will now fill the cannula, the little tube under your skin, with insulin.



Select **Fill**.



Select **Fill amount** and enter :

- 0.300 if using 6mm cannula
- 0.500 if using 9mm cannula

Then press **○**.



NOTE: Your pump will remember the **Fill amount** that you used last. Always verify that the Fill amount is correct.

- If it is correct, press **▼** to **Fill Now** and press **○**.
- If it is incorrect, press **○**. Change to correct amount and press **○**. Select **Fill Now**.



Select **Fill Now**.



The Home screen displays the insulin as it fills the cannula.



NOTE: Select **Stop Filling** if you need to stop, for example, if you notice the **Total** amount is incorrect. This should rarely happen if you have verified the **Fill amount** on the previous screen.

Your infusion set change is now complete!