

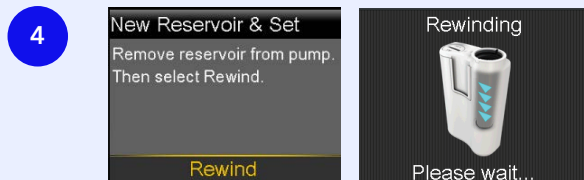
Medtronic MiniMed 780G™ System **Extended™** Infusion Set & Reservoir Change



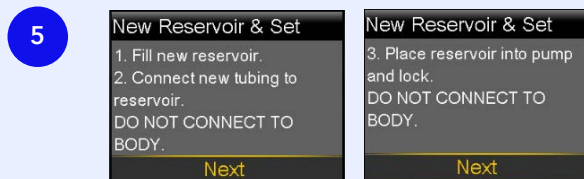
From the Home Screen navigate to the Reservoir & Set menu, then select **New Reservoir & Set**.



Remove infusion set from your body and discard. Select **Next**.



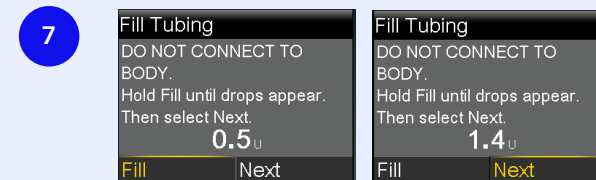
Remove reservoir from your pump and select **Rewind**.



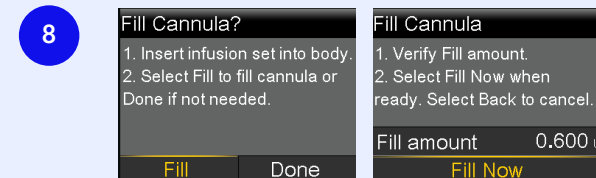
Fill new reservoir and connect new tubing. Do not connect infusion set to body. Select **Next**.



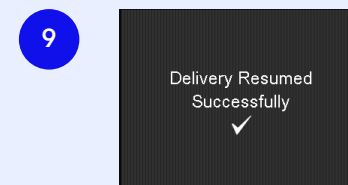
Select and hold **Load** until checkmark appears on screen. Do not connect infusion set to body. When the checkmark appears, select **Next**.



Remove white cap from the site connector. Select **Fill** and keep holding until there is no air in tubing and drops appear at the connector. Do not connect infusion set to body. Select **Next** after drops appear.



Insert new infusion set into body. Select **Fill**. Ensure **Fill amount is 0.600U**. Select **Fill Now**.



The reservoir and infusion set change is now complete.

Medtronic Australasia Pty Ltd

Level 8, 11 Khartoum Street Macquarie Park,
NSW 2113, Australia
Tel: +61 2 9857 9000
Fax: +61 2 9889 5167
Toll Free: 1800 777 808

E-Mail: australia.diabetes@medtronic.com
Facebook: www.facebook.com/MedtronicDiabetesAUS
YouTube: Medtronic Diabetes ANZ
<https://www.medtronic-diabetes.com.au/>

Always read the instructions for use.

For detailed information regarding the instructions for use, indications, contraindications, warnings, precautions, and potential adverse events, please consult the device manual. For further information, contact your local Medtronic representative.

© 2025 Medtronic Australasia Pty Ltd. All Rights Reserved. Please note: In contacting the Diabetes Toll Free, your personal and health information may be disclosed to an operator located outside Australia.



Avoid reservoir and infusion set changes before bed.
Monitor glucose levels for 2 hours after changing infusion set.